



The SX-70VG

The SX-70VG has an undercarriage variable gauge to facilitate transport and provide improved stability. The seat rotates along with all the controls thus improving comfort and visibility for the operator.

The machine is equipped with ROPS protection, in which a closed cab with wide visibility, heating, and air conditioning can be mounted. The anti-tipping system processes the position of the counterweight, adjusting the relative lifting capacity, showed on a 12" display.



LIFT CAPACITY
70-ton



WEIGHT
101,412 lb

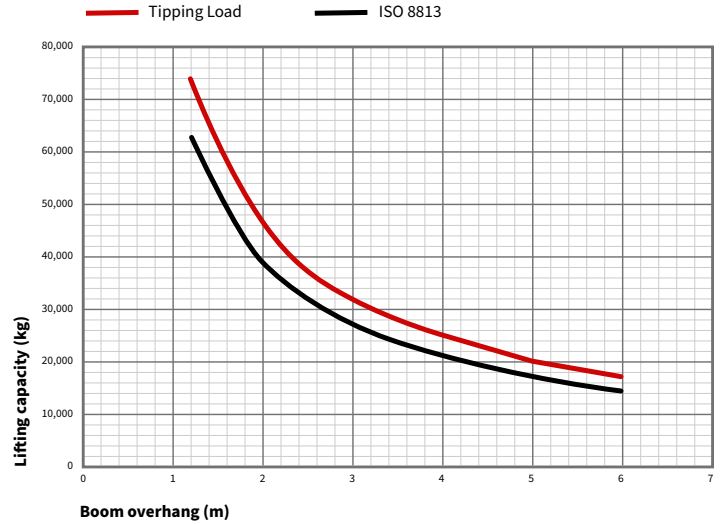


HORSEPOWER
302 HP

Specifications

| | |
|---|--|
| Engine | CAT C7.1 -da 302HP@2200rpm EU Stage V / Tier 3 / Tier 4 Final |
| Hydrostatic transmission | Danfoss |
| Working weight | 101,412 lb (46,000 kg) |
| Speed | 3.7 mph (6 km/h) |
| Operator protection | Roll-bar ROPS-FOPS |
| Maximum load capacity | 70 ton |
| Winches maximum speed | 262 ft/min (80 m/min) |
| Ropes | 19 mm diameter |
| Standard arm | 23 ft (7 m) |
| Track shoes width | 28 in (71 cm) |
| Track length | 14.5 in (37 cm) |
| Maximum capacity | 13 US gal/min (50 L/min) |
| Gradient tolerances (longitudinal) | 30° |
| Gradient tolerances (cross slope) | 15° |

Lifting Chart



Dimensions

