







Index

Welding Deck	1
Sand-blasting Deck	2
Flat Bed	3
Dump Bed	4
Personnel Carrier	5
Water Tank	6
Fifth Wheel & Pintle Hitch	7
Contact	Back Cover



About the Welding Deck

The welding deck is fitted on Superior's light duty flatbed and can be customized to the customer's exact specifications. Automatic welding decks are also available.

Main Components

- (1) AKSA 100 Generator (or equivalent)
- (1) Champion Compressor D173843 (or equivalent)
- (4) Miller XMT 350 Field Pro Welders or
Lincoln Electric V350 Welders
 - 4 x 100' Leads
 - 4 x 100' Grounds
 - 4 X Remotes
- (1) 80 Gallon Air Tank
- (1) Electrical Box
- (1) Knuckle Boom

Dimensions

Length	12.5 ft (3.8 m)
Width	8.5 ft (2.6 m)

Lincoln® V350

Input Power	200/220/380/415/440/1/3/50-60
Rated Output	350A/34V@60% 300A/32V@100%
Input Current	32a
Output Range	5-425a
Dimensions (H x W x D)	14.8 x 13.3 x 27.9 in (37.6 x 33.8 x 70.9 cm)
Net Weight	82.6 lb (37.5 kg)

Miller XMT® 350 FieldPro™

Weldable Metals	Aluminum Specialty Metals Stainless Steel Steel
Input Voltage	208 V 220/230/240 V 380/400 V 460/480 V 575 V
Rated Carbon Diameter	1/4 in (6.4 mm)
Input Phase	1- and 3-Phase
Input Hz	50/60 Hz
Current Type	DC
Portability	Handle(s)
Running Gear / Cart (Optional)	
Weld Output	CC / CV
Dimensions (H x W x D)	19 x 16 x 29 in (48.3 x 40.6 x 73.7 cm)
Net Weight	100.5 lb (45.3 kg)

Sand-blasting Deck



About the Sand-blasting Deck

The sand-blasting deck features a lowered rear platform for easy access which makes loading material into the pod easier, with both sides of the platform open for loading/unloading of material on pallets.

Main Components

- (1) Marco Sand-blaster with 750 CFM Aftercooler
- (1) Doosan P425 HP375 Air compressor

Dimensions (with running gear)

Length	26.6 ft (8 m)
Width	8.3 ft (2.53 m)
Height	10 ft (3 m)
Track Width	8.3 ft (2.53 m)
Shipping Weight (w/o fuel)	4,470 lb (2,027 kg)
Working Weight (with fuel)	5,030 lb (2,281 kg)

Dimensions (Platform Only)

Length	18.5 ft (5.64 m)
Width	8.3 ft (2.53 m)
Height	5.5 ft (1.67 m)
Shipping Weight (w/o fuel)	4,207 lb (1,908 kg)
Working Weight (with fuel)	4,767 lb (2,162 kg)

Compressor (Rotary Screw/Single-stage)

	Low Pressure	High Pressure
Free-Air Delivery	425 cfm (12 m ³ /min)	375 cfm (10.6 m ³ /min)
Rated Operating Pressure	100 psig (6.9 bar)	150 psig (10.3 bar)
Pressure Range	80 psig (5.5 bar)	175 psig (12.1 bar)

Air Discharge Outlet Size	1.25 in (31.8 mm)
Air Discharge Outlet Quantity	1
Fuel Tank Capacity	60 gal (227 liters)

Engine

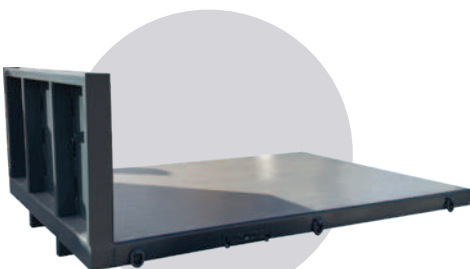
Make/Model	Cummins/QSB4.5
Emissions Tier Level	Tier 4 Final (T4F)
Number of Cylinders	4
Displacement	272 cu in (4.5 liters)
Electrical	24V

	Low Pressure	High Pressure
Rated Speed	2200 rpm	1950 rpm
Idle Speed	1500 rpm	1500 rpm
Bhp @ Rated Speed	130 Bhp (97 kW)	138 Bhp (102.9 kW)
Hrs of Operation at Full Load	10.9	10.6



About the Flat Bed

The flat bed is made from A36 steel with 5/16 inch thickness for the sides, floor and head-board and has three heavy duty grommets on either side for securing the load (heavy duty only), a tuckable step ladder on either side and hydraulic cylinders for load dumping.



Heavy Duty Flat Bed



Light Duty Flat Bed

ST-150X Flat Bed Specs

Light Duty

Flat Bed Dimensions (L x W)	12 x 8.3 ft (3.65 x 2.5 m)
Machine Dimensions (L x W x H)	22.08 x 8.2 x 10.38 ft (6.73 x 2.5 x 3.16 m)

Heavy Duty

Flat Bed Dimensions (L x W)	12 x 8.3 ft (3.65 x 2.5 m)
Machine Dimensions (L x W x H)	22.08 x 8.2 x 10.38 ft (6.73 x 2.5 x 3.16 m)
Tilt Angle	55°

ST-220X/R Flat Bed Specs

Heavy Duty

Flat Bed Dimensions (L x W)	12 x 9.8 ft (3.65 x 2.98 m)
Machine Dimensions (L x W x H)	23 x 9.84 x 10.57 ft (7 x 3 x 3.22 m)
Tilt Angle	55°

ST-300X Flat Bed Specs

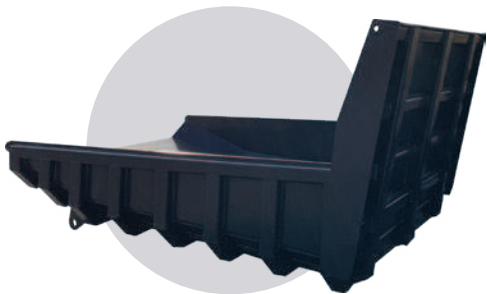
Heavy Duty

Flat Bed Dimensions (L x W)	12 x 9.8 ft (3.65 x 2.98 m)
Machine Dimensions (L x W x H)	23 x 9.84 x 10.57 ft (7 x 3 x 3.22 m)
Tilt Angle	55°



About the Dump Bed

The heavy duty dump bed is made with a reinforced steel cross-frame to withstand the high stresses of heavy material. The dump bed can fit on any size carrier.



ST-150X Dump Bed Specs

Dump Bed Dimensions (L x W)	11.5 x 8.2 ft (3.5 x 2.5 m)
Machine Dimensions (L x W x H)	21.09 x 8.2 x 10.38 ft (6.4 x 2.5 x 3.16 m)
Tilt Angle	55°
Capacity	5.62 yd ³ (4.3 m ³)

ST-220X/R Dump Bed Specs

Dump Bed Dimensions (L x W)	10.75 x 9.7 ft (3.7 x 2.95 m)
Machine Dimensions (L x W x H)	20.5 x 9.8 x 10.45 ft (6.25 x 3 x 3.22 m)
Tilt Angle	55°
Capacity	6.5 yd ³ (4.96 m ³)

ST-300X Dump Bed Specs

Dump Bed Dimensions (L x W)	10.75 x 9.7 ft (3.7 x 2.95 m)
Machine Dimensions (L x W x H)	20.5 x 9.8 x 10.57 ft (6.25 x 3 x 3.22 m)
Tilt Angle	55°
Capacity	7.5 yd ³ (5.74 m ³)



Optional Tailgate

Personnel Carrier



Personnel Carrier

The personnel carrier is the ultimate solution for transporting workers to and from the jobsite through a muddy or otherwise inaccessible right-of-way.



Features

- (10) Ten seats, five on each side of carrier with seat belts. Can fit up to 22 seats total.
- Under seat storage compartments, outside access
- Hydraulic driven air conditioner and heating
- Drop down rear step for easy boarding
- (2) Side windows (slide open)
- (2) Side windows (swing open)
- ROPS Certified





Water Tank

The water tank platform is specifically built for the ST-220X carrier. It consists of a 2,000 gallon tank mounted on a 12' flat bed.



Features

- 3" hydraulic pump with 3" piping
- 3 adjustable spray heads (1) on each side and (1) on the rear
- Can be loaded from overhead standpipe, ground level fire hydrant, or pump
- Includes steps accessing the top of the tank with safety handrails
- Easy access pull down ladder on right side of the platform
- All controls in the cab next to the operator
- Top mounted covered manhole with closeable hatch
- Drain valves to drain lines and a tank for cold weather or for cleaning the tank

Dimensions

Total Length with Sprayheads Out	14.6 ft (4.45 m)
Width with Sprayheads Out	11.25 ft (3.4 m)
Height	7.7 ft (2.34 m)



Fifth Wheel & Pintle Hitch



Fifth Wheel

Superior's fifth wheel attachment uses a Holland FWS1 top plate, which is one of the lightest, most durable top plates available anywhere.

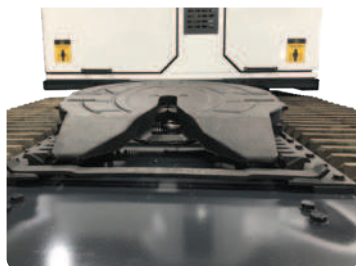


Features

- Simple and quick lock adjustment pin with 4 incremental positions reduces the risk of over-adjustment.
- A jaw return spring that prevents the jaw from closing while bob-tailing.
- Visible 'red' safety indicator provides driver with an easy, clear visual indication that the wheel is properly coupled. There is also an automatic secondary locking mechanism.

Dimensions

Top Plate Weight	222 lb (100 kg)
Load Capacity	50,000 lb (22,680 kg)
Pull Capacity	150,000 lbs (68,000 kg)



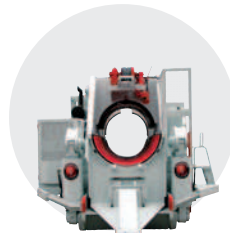




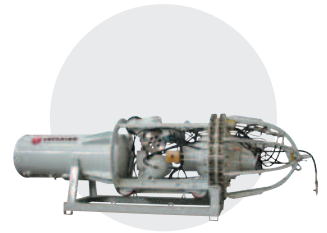
Padding Machines



Pipelayers



Pipe Benders



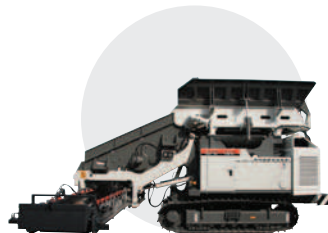
Pipeline Accessories



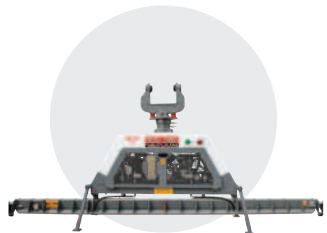
Crawler Carriers



Hydraulic Kits



Top-Loading Padders



Vacuum Lifts



SUPERIOR
MANUFACTURING

2200 Post Oak Blvd., Ste. 1400
Houston, TX 77056
Main 281.457.4400
U.S. Toll Free 800.383.2666
sales@superiormftg.com
www.superiormftg.com

U.S. +1.281.457.4400
Canada +1.281.457.4400
Mexico & Latin America +54.911.5049.8121
Brazil +54.911.4083.1274
Europe +49.0.151.226.52385
India +91.11.414.59230
Africa +49.0.170.583.4021
Australia +61.0.488.661.985
Middle East & Asian Pacific +61.0.488.661.985