



CPX-561 Pipelayer

Max lift capacity (SAE J743B) 18,200 kg / 40,123 lb

Operating weight 14,152 kg / 31,200 lb

Net flywheel power 78 kW / 105 HP



SUPERIOR
MANUFACTURING

CPX-561 PIPELAYER

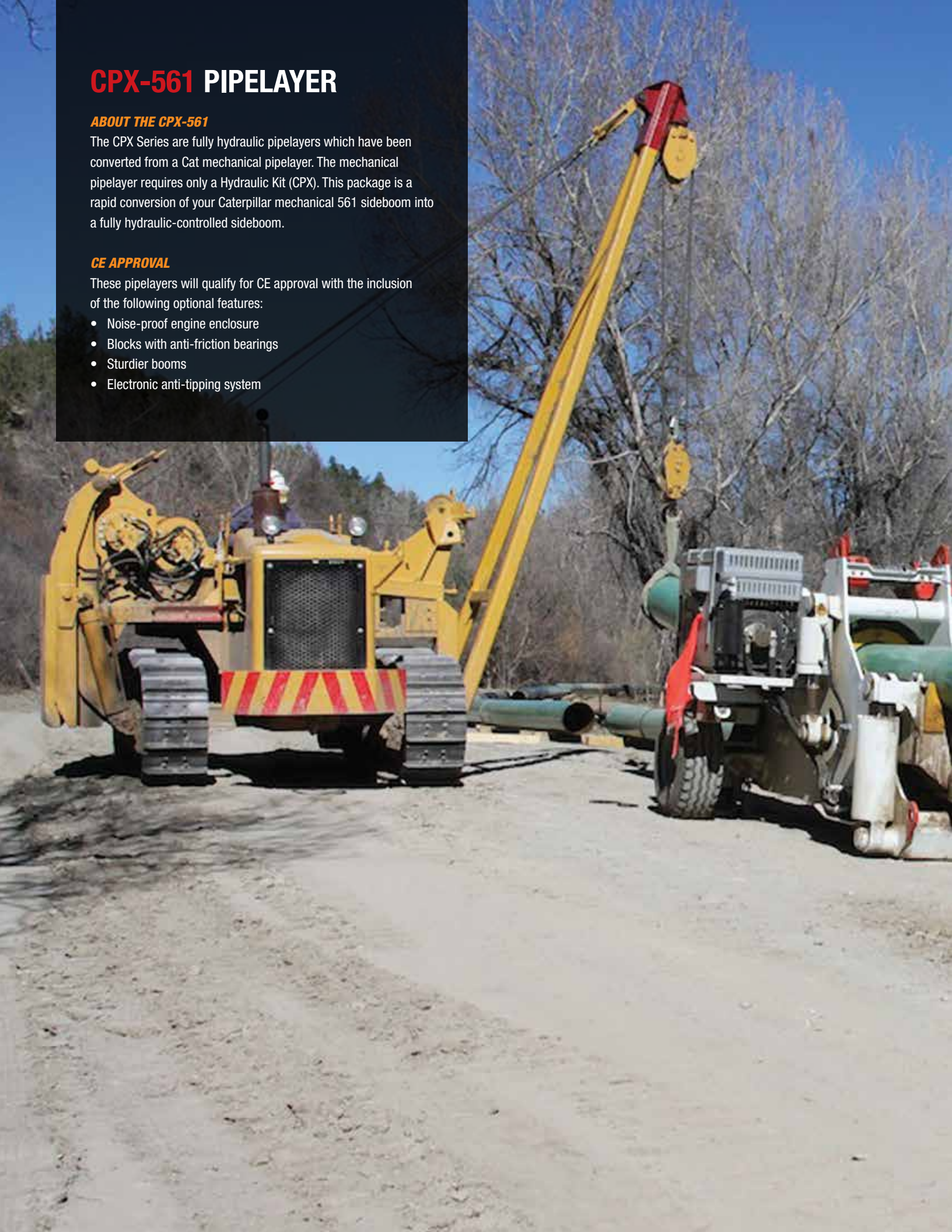
ABOUT THE CPX-561

The CPX Series are fully hydraulic pipelayers which have been converted from a Cat mechanical pipelayer. The mechanical pipelayer requires only a Hydraulic Kit (CPX). This package is a rapid conversion of your Caterpillar mechanical 561 sideboom into a fully hydraulic-controlled sideboom.

CE APPROVAL

These pipelayers will qualify for CE approval with the inclusion of the following optional features:

- Noise-proof engine enclosure
- Blocks with anti-friction bearings
- Sturdier booms
- Electronic anti-tipping system



GENERAL SPECIFICATIONS

HYDRAULIC SYSTEM

| | |
|--------------------------|------------------------------------|
| Pump | (Bosch-Rexroth) 1 independent pump |
| Maximum capacity | 128 lt/m - 484 U.S. gal/min |
| Maximum working pressure | 220 bar / 3,190 p.s.i. |

HYDRAULIC WINCHES

| | |
|-------------|---|
| Type | Hydraulically controlled drums (reversible). Control valve block in open circuit |
| Final drive | Single-stage planetary gear |
| Brakes | Integrated multiple-disk negative brake |

| | HOOK | BOOM |
|---------------------------|------------------------|------------------------|
| Drum diameter | 324 mm / 12.75 in | 324 mm / 12.75 in |
| Flange diameter | 430 mm / 16.9 in | 430 mm / 16.9 in |
| Drum length | 280 mm / 11 in | 215 mm / 8.5 in |
| Capacity (16 mm / 5/8 in) | 59.6 m / 195.5 ft | 45.5 m / 149.5 ft |
| Wire rope installed | 40 m / 131.2 ft | 40 m / 131.2 ft |
| Rope diameter | 16 mm / 5/8 in | 16 mm / 5/8 in |
| Bare drum hook speed | 53 m/min - 174 ft/min | - |
| 3 part line hook speed | 18 m/min / 59 ft / min | - |
| Boom line speed | - | 18 m/min / 59 ft / min |

BOOM

| | |
|--------------------------------|--|
| Type | 4.57 m / 15 ft welded box square section |
| Diameter wire rope | 16 mm / 5/8 in |
| Minimum breaking strength rope | 211 kn / 47,398 lb |
| Part load line | 3 |
| Part boom line | 3 |

CONTROLS

| | |
|--------|--------------------|
| Type | Pilot operated |
| Safety | Emergency shut-off |

ADJUSTABLE COUNTERWEIGHTS

| | |
|--------------------------------|-------------------------------|
| Removable counterweight leaves | 5 leaves 279 kg / 614 lb each |
| Total weight extendable | 865 kg / 1,903 lb |

SET BLOCKS

| | |
|--------------------------------------|---------------------|
| Class of mechanism (UNI ISO 4301/02) | M3 |
| Pulley diameter | 256 mm / 10 in |
| Pulley rotation | Roller bearing each |

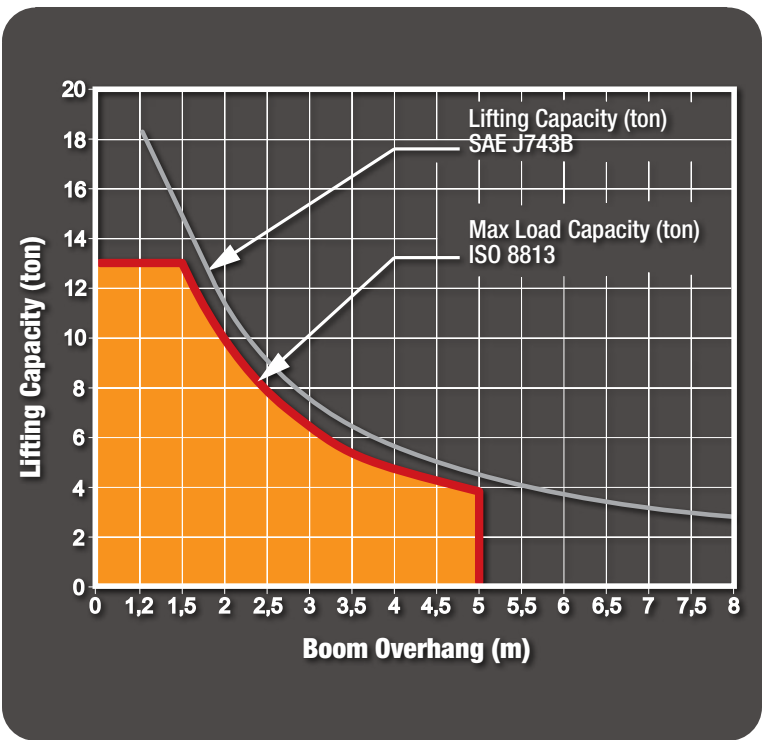
CAPACITIES

| | |
|------------------------|------------------------------|
| Hydraulic System Tank | 100 liters / 26 U.S. gallons |
| (2) Final drive (each) | 0.75 liters / 0.2 U.S. gal |

WINCH SPECIFICATIONS

LIFTING CAPACITY

15 ft / 4.58 m boom



MAIN PUMP

| | |
|------|---|
| Type | Bosch-Rexroth axial piston variable displacement pump |
|------|---|

VALVES

| | |
|------------------|---|
| Type | Bosch load-sensing mobile control block proportional directional valves |
| Max capacity | 286 liters/min - 75.5 U.S. gal/min |
| Working pressure | 320 bar - 4,642 p.s.i. |

CONTROL

| | |
|------|--|
| Type | Pilot units for remote control of winch motors Progressive and sensitive operations |
|------|--|

SERVICE PUMP

| | |
|------------------|----------------------------------|
| Type | Gear pump |
| Max capacity | 10 liters.min - 2.6 U.S. gal/min |
| Working pressure | 30 bar - 435 p.s.i. |

HYDRAULIC TANK

| | |
|--------------|----------------------------|
| Type | Pressurized type |
| Max capacity | 100 liters - 26.4 U.S. gal |

FILTER

| | |
|--------------|-----------------------------------|
| Type | Donaldson FI0500 |
| Max capacity | 500 liters/min - 132 U.S. gal/min |



HYDRAULIC SYSTEM OPTIONS

ALL HYDRAULIC

- **Freefall System**

When the button is engaged, the load free-falls and then immediately stops when the button is released.

IMPORTANT: Improper use of this feature may cause damage to the winch. Read all documentation before use.

- **Boom Kick-Out System**

This system will ensure you will never bend another boom.

- **Anti-Two Block**

Sets a minimum distance between the top block and the hook block, preventing collisions between them.

ELECTRONIC OVER HYDRAULIC

- **Freefall system, Boom kick-out system and anti-two block plus:**

- **Anti-Tipping System**

Prevents tipping by calculating the maximum load that can be lifted.



| FEATURE | SUPERIOR | MIDWESTERN® | CATERPILLAR® |
|------------------------|----------|-------------|--------------|
| Single lever control | ✓ | ✗ | ✗ |
| Free-fall system | ✓ | ✓ | ✓ |
| Vertical boom kick-out | ✓ | ✓ | ✓ |
| Anti-two block | ✓ | ✗ | ✗ |
| Anti-tipping system | ✓ | ✗ | ✗ |
| CE compliance | ✓ | ✗ | ✓ |

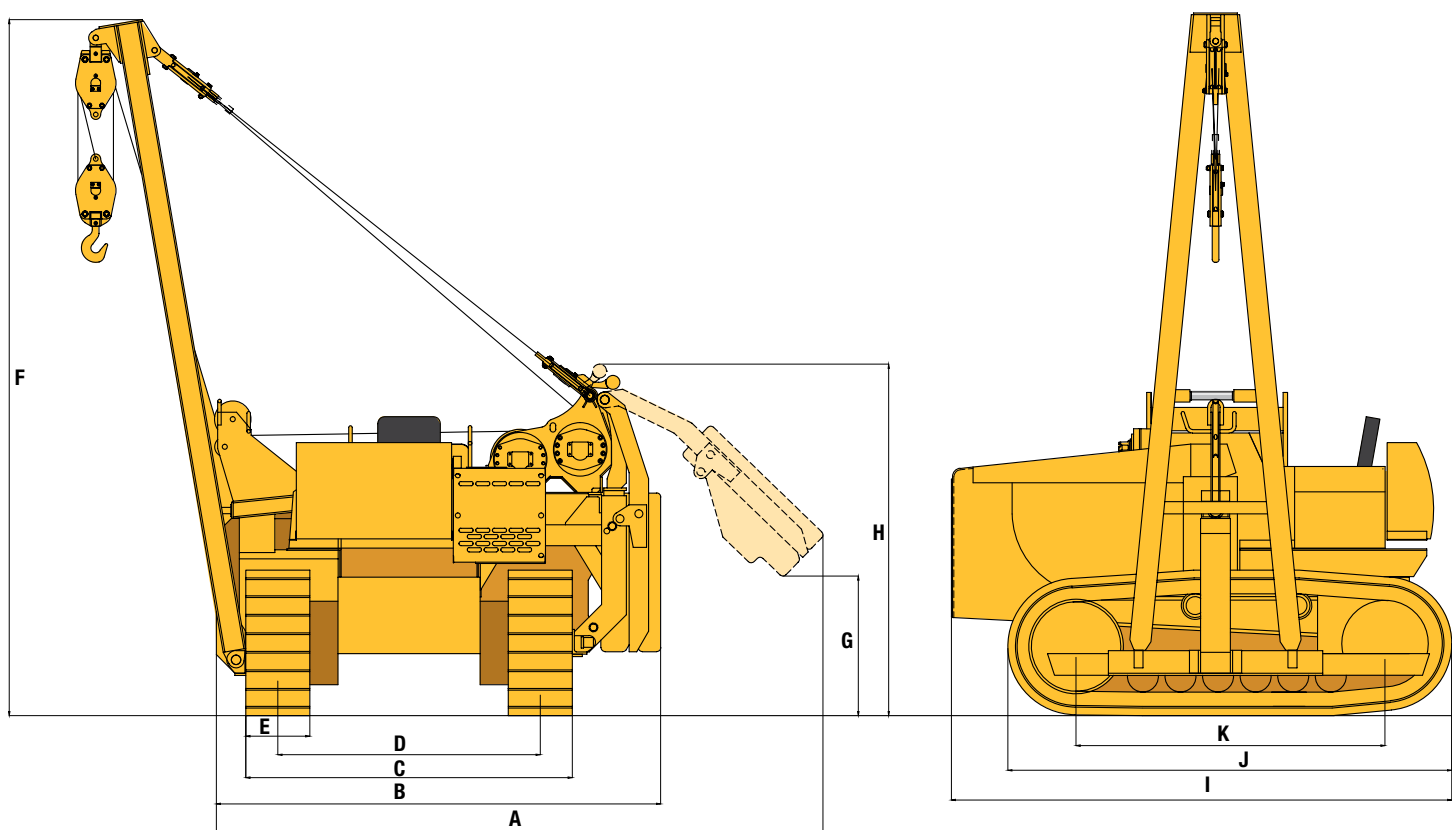


SINGLE JOYSTICK CONTROLLER

SUPERIOR'S single lever control system allows the operator to control the load with one fully-directional joystick for both the boom line and the load line. The operator can activate both winches at the same time by positioning the joystick in different diagonal positions for different desired effects. With light pressure applied, the operator can inch, or with maximum pressure applied and full throttle, can go full bore. No gearing system is necessary, as our package will operate as efficiently as the two gear systems used by our competitors.

DIMENSIONS

Operating weight 14,152 kg / 31,200 lb



| | Feet | Meters |
|--|---------|--------|
| A Width with extended counterweights | 14.3 ft | 4.36 m |
| B Width with retracted counterweights | 10.5 ft | 3.19 m |
| C Width of tractor | 7.7 ft | 2.35 m |
| D Track gauge | 6.2 ft | 1.89 m |
| E Track width | 1.5 ft | 46 cm |
| F Height to top of boom | 16.4 ft | 5 m |
| G Height to bottom of counterweights (extended) | 3.3 ft | 1 m |
| H Height to top of counterweights (extended) | 8.3 ft | 2.5 m |
| I Overall length | 11.8 ft | 3.6 m |
| J Tracks length | 10.5 ft | 3.2 m |
| K Length of tracks on the ground | 7.3 ft | 2.2 m |

AVAILABLE MODELS



SP-D5M/N LGP



SP-D6M/N LGP



CPX-561



CPX-571



SP/CPX-572



SP/CPX-583



SP/CPX-594

CONTACT INFORMATION

Europe

Phone +49.0.231.963.3073

pipelinece@wwmach.com

Russia, China and the Middle East

Phone +39.349.198.1281 Italy

Phone +7.495.507.4827 Russia

fsupipeline@wwmach.com

India

Phone +91.11.414.59230

pipelineind@wwmach.com

Africa

Intl. Toll Free 800.9675.3948

pipeline@wwmach.com

U.S. and Canada

Phone +1.281.457.4400

pipelinena@wwmach.com

Mexico and Latin America

Phone +54.11.4381.5491

pipelinesa@wwmach.com

Brazil

Phone 0021.800.9675.3948

pipelinebr@wwmach.com

Australia

Phone +61.0.400.144.432

pipelinece@wwmach.com

All information is subject to change without notice.



2200 Post Oak Blvd., Ste. 1400 | Houston, TX 77056 | Phone 281.457.4400
U.S. Toll Free 800.383.2666 | Intl. Toll Free 800.9675.3948
pipeline@wwmach.com | www.superiormftg.com

