



## SVL-90/130/220 VACUUM LIFTS

|                  |                    |                     |                     |
|------------------|--------------------|---------------------|---------------------|
| Lifting capacity | 9 ton (SVL-90)     | 13 ton (SVL-130)    | 22 ton (SVL-220)    |
| Operating weight | 2,094 lbs / 950 kg | 3,307 lbs / 1500 kg | 4,409 lbs / 2000 kg |
| Excavator size   | 20/30 ton          | 25/35 ton           | 45/55 ton           |





The SVL series helps you create a safer work environment by reducing the ground personnel required to handle the pipe, dramatically decreasing the chances of an accident. It can be operated via a remote controller or through a wired controller in the cabin.

The SVL series can be hooked up in minutes to your excavator, crane or pipelayer. It can handle pipe sizes ranging from 6" to 62" in any coating, including concrete or bare steel, without causing any damage to the coating or pipe bevel.

The suction pads are available for any pipe length and diameter. Double-jointed pads are also available to handle double-jointed or welded pipe.

One of the SVL's series most notable features is that, unlike other models on the market, each suction pad will accommodate a range of pipe sizes. Other features include audio/visual alarm, which alerts the operator of insufficient bond between pad and pipe, and a hydraulic rotator with horizontal stabilizer.

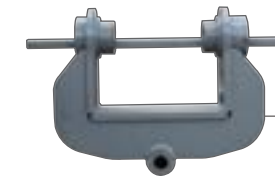


**Remote Control**

Serves to control the operation without the use of a connected electric cable. This control will apply and release the vacuum and as added safety it requires the operator to push two buttons at the same time to release the pipe. As an option, it can also control the rotation of the rotator mechanism.

**Control Board**

This wired controller can be placed inside the cabin and used instead of the remote.



**Yoke Attachment**

Allows to easily change sizes of excavators by only replacing a bushing.

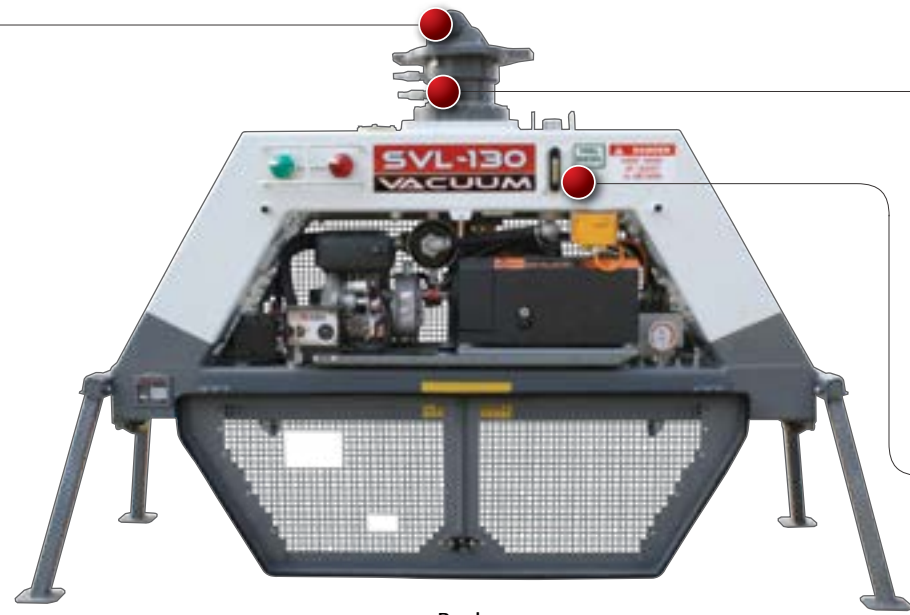


**Rubber Seals (suction pads)**

Designed for less time to suction ratios, and are especially effective in extreme cold and hot temperatures.



Front



Back

**Flashing Lights**

Indicate whether there is an adequate bond between the pipe and the suction pad.



**Alarm Sound Indicator**

Makes loud alarm sound simultaneously with red flashing alarm light.



**Manometer**

The manometer is used for vacuum pressure measurement between pipe and suction pad. There's another manometer located in the suction pad.

**Rotating Head**

Rotates the body of the vacuum lift for greater control in the placement of the pipe.

**Integrated Fuel Tank**

It can operate continuously for a full day. Fuel indicator can be easily viewed.





**SVL-90**

**ENGINE**

|                 |                          |
|-----------------|--------------------------|
| Type            | YANMAR L48N6             |
| Rated power     | 2.7 Kw - 3.8 HP          |
| Diesel capacity | 2.7 U.S. gal - 10 liters |

**VACUUM PUMP**

|                      |                                      |
|----------------------|--------------------------------------|
| Vacuum pump capacity | 1,767 cu ft/h - 50 m <sup>3</sup> /h |
| Suction pressure     | 40 mbar                              |

**HYDRAULIC ROTATOR**

|                               |                                |
|-------------------------------|--------------------------------|
| Maximum axial load of rotator | 22,000 lbs - 10 metric tons    |
| Maximum torque                | 350 daNm                       |
| Maximum rotation pressure     | 4,640 p.s.i. - 320 bar         |
| Oil flow volume               | 5 U.S. gal/min - 20 liters/min |
| Rotation                      | Continuous                     |

**CAPACITIES**

|                  |                       |
|------------------|-----------------------|
| Lifting capacity | 9,000 kg / 19,842 lbs |
|------------------|-----------------------|

**RECOMMENDED EXCAVATOR SIZE**

**MODEL**

|         |           |
|---------|-----------|
| SVL-90  | 20/30 ton |
| SVL-130 | 25/35 ton |
| SVL-220 | 45/55 ton |

Note: any pad can be used on any of the 3 sizes of vacuum lifts.

**SVL-130**

**ENGINE**

|                 |                           |
|-----------------|---------------------------|
| Type            | Hatz 1B50                 |
| Rated power     | 7.9 kW / 10.7HP           |
| Diesel capacity | 17.7 U.S. gal - 67 liters |

**VACUUM PUMP**

|                      |                                     |
|----------------------|-------------------------------------|
| Vacuum pump capacity | 3,531 cu ft - 100 m <sup>3</sup> /h |
| Suction pressure     | 40 mbar                             |

**HYDRAULIC ROTATOR**

|                               |                                |
|-------------------------------|--------------------------------|
| Maximum axial load of rotator | 33,000 lbs - 15 metric tons    |
| Maximum torque                | 380 daNm                       |
| Maximum rotation pressure     | 4,640 p.s.i. - 320 bar         |
| Oil flow volume               | 5 U.S. gal/min - 20 liters/min |
| Rotation                      | Continuous                     |

**CAPACITIES**

|                  |                      |
|------------------|----------------------|
| Lifting capacity | 13,000 kg/28,660 lbs |
|------------------|----------------------|

**SVL-220**

**ENGINE**

|                 |                           |
|-----------------|---------------------------|
| Type            | Hatz 1B50                 |
| Rated power     | 7.9 kW / 10.7HP           |
| Diesel capacity | 17.7 U.S. gal - 67 liters |

**VACUUM PUMP**

|                      |                                     |
|----------------------|-------------------------------------|
| Vacuum pump capacity | 6,180 cu ft - 175 m <sup>3</sup> /h |
| Suction pressure     | 40 mbar                             |

**HYDRAULIC ROTATOR**

|                               |                                |
|-------------------------------|--------------------------------|
| Maximum axial load of rotator | 55,000 lbs - 25 metric tons    |
| Maximum torque                | 840 daNm                       |
| Maximum rotation pressure     | 4,640 p.s.i. - 320 bar         |
| Oil flow volume               | 8 U.S. gal/min - 30 liters/min |
| Rotation                      | Continuous                     |

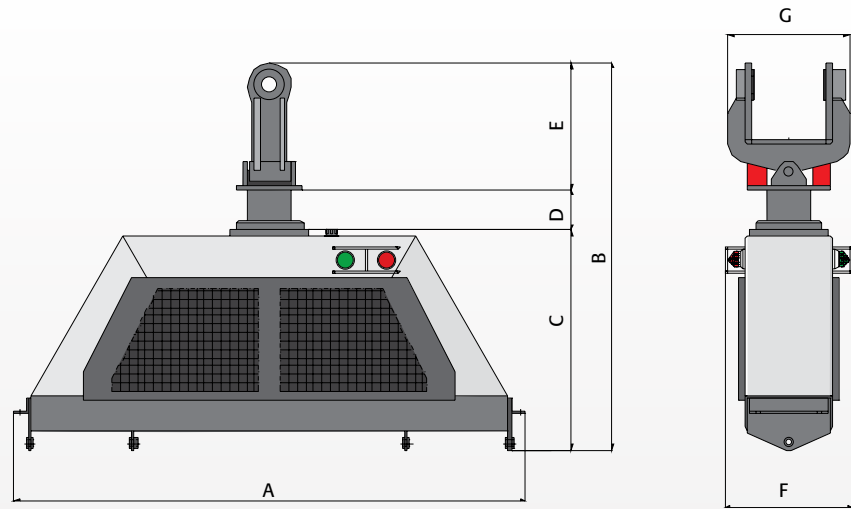
**CAPACITIES**

|                  |                      |
|------------------|----------------------|
| Lifting capacity | 22,000 kg/48,502 lbs |
|------------------|----------------------|





## DIMENSIONS



|                                | SVL-90                    | SVL-130                    | SVL-220                    |
|--------------------------------|---------------------------|----------------------------|----------------------------|
| A Overall width                | 284.5 cm / 112 in         | 284.5 cm / 112 in          | 284.5 cm / 112 in          |
| B Overall height               | 190.3 cm / 74.9 in        | 223.1 cm / 87.8 in         | 233.1 cm / 91.8 in         |
| C Height (minus rotating head) | 91.9 cm / 36.2 in         | 124.8 cm / 49.1 in         | 134.8 cm / 53.1 in         |
| D Height of rotating head      | 23.9 cm / 9.4 in          | 23.8 cm / 9.4 in           | 23.8 cm / 9.4 in           |
| E Height of yoke attachment    | 74.5 cm / 29.3 in         | 74.5 cm / 29.3 in          | 74.5 cm / 29.3 in          |
| F Depth                        | 67 cm / 26.4 in           | 72 cm / 28.4 in            | 72 cm / 28.4 in            |
| G Depth of yoke attachment     | 89.1 cm / 35 in           | 89.1 cm / 35 in            | 89.1 cm / 35 in            |
| <b>Weight</b>                  | <b>950 kg / 2,094 lbs</b> | <b>1500 kg / 3,307 lbs</b> | <b>2000 kg / 4,409 lbs</b> |

## AVAILABLE MODELS



SVL-90  
Lifting capacity: 9 ton



SVL-130  
Lifting capacity: 13 ton



SVL-220  
Lifting capacity: 22 ton





Padding Machines



Pipelayers



Crawler Carriers



Pipeline Accessories



Pipe Benders



Hydraulic Kits



Pipe Facing Machines



Vacuum Lifts



Top-Loading Padders



Rock Dump Crawlers



2200 Post Oak Blvd., Ste. 1400 | Houston, TX 77056  
Main 281.457.4400 | U.S. Toll Free 800.383.2666  
sales@superiormftg.com | www.superiormftg.com

U.S.  
Phone +1.281.457.4400

MEXICO & LATIN AMERICA  
Phone +54.911.5049.8121

EUROPE  
Phone +49.0.231.963.3073

AFRICA  
Phone +49.0.170.583.4021

MIDDLE EAST & ASIAN PACIFIC  
Phone +61.0.488.661.985

CANADA  
Phone +1.281.457.4400

BRAZIL  
Phone +54.911.4083.1274

INDIA  
Phone +91.11.414.59230

AUSTRALIA  
Phone +61.0.400.144.432

*Weights and dimensions are approximate. All information is subject to change without notice.  
All trademarks are the property of their respective owners. All rights reserved.*

