

PIPELAYERS

SX-260



Specs at a glance

-  Lifting Capacity **48,000 lb (21,770 kg)**
-  Weight **44,092 lb (20,000 kg)**
-  Horsepower **202 HP (150 kW)**

Specifications

Engine

Model	Caterpillar C7.1 ACERT Tier 4
Net flywheel power (DIN 6270-SAEJ 1349)	202 HP (150 kW)
Governed speed	2,100 rpm
Displacement	433 in ³ (7.1 L)

Hydraulic System

Main pumps	(Bosch-Rexroth) 3 independent variable pumps
Maximum capacity	2x27.7 US gal/min (2x135 L/min)
Maximum operating pressure	5,945 PSI (410 bar)
Service pumps	Triple gear
Maximum capacity	6.7 US gal/min (31 L/min)

Transmission

Type	Hydrostatic closed circuit
Brakes	(2) Integrated negative control
Final drives	Epicycloidal oil soaked
Maximum speed:	
- 1 speed	2.4 mph (4 km/h)
- 2 speed	5.6 mph (9 km/h)

Track Frame

Hard track frame with sealed and lubricated chain	
Number of bottom rollers	8+8
Number of carrying rollers	2+2
Standard shoes width	22 in (56 cm)
Ground pressure	9 lb/in ² (0.62 kg/cm ²)
Ground contact area	34.3 ft ² (31,900 cm ²)

Adjustable Counterweights

QD-CS: quick-disconnected counterweight system for quick disassembly. (entire counterweight pack.)

Removable Counterweight	
- Front pack (6)	3,781 lb (1,715 kg)
- Rear pack (5)	3,164 lb (1,435 kg)
Total weight extendable	6,945 lb (3,150 kg)

Fluid Capacities

Fuel tank	76 US gal (290 L)
Hydraulic system circuit	45 US gal (175 L)
Cooling system	5.7 US gal (22 L)
Engine oil	4.2 US gal (16 L)
Final drive each	4.2+4.2 US gal (16+16 L)

Boom

Type	Std. 18 ft (5.5 m) welded box square section
Optional	20 ft (6.1 m) welded box square section
Diameter wire rope	5/8 in (16 mm)
Minimum breaking strength rope	47,415 lb (211 KN)
Part load line	4
Part boom line	4

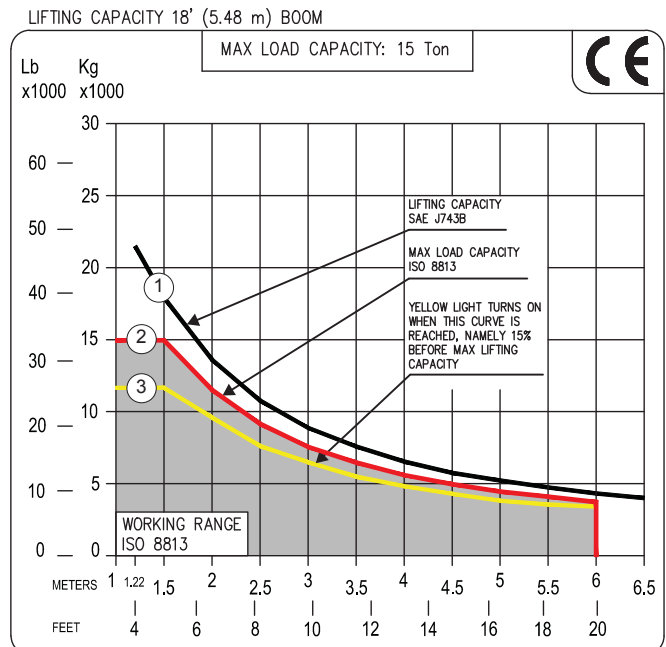
Controls

Type Twin pilot operated with emergency shut-off TPS System: twin steering system with two levers to control the tracks independently in order to achieve small and precise movements.

Electric System

Operating voltage	24 V
Maintenance free supplied batteries	2
Capacity (total)	100 Ah
Starter capacity	8 Kw
Alternator	55 A

Lifting Capacity



Winch Specifications

Hydraulic Winches

Type	Hydraulic controlled drums (reversible.) Driven by variable flow hydraulic pump and control valve block in open circuit.	
Maximum pressure	4,641 PSI (310 bar)	
Final drive	Compact hydrostatic drive unit, 3-stage planetary gear	
Brakes	Integrated oil bath multiple disk brake, spring applied hydraulic release	

Winch	Hook	Boom
Drum diameter	13 in (324 mm)	13 in (32.4 cm)
Flange Diameter	17 in (430 mm)	17 in (43 cm)
Drum Length	11 in (280 mm)	11 in (28 cm)
Capacity (5/8 in [16 mm])	170 ft (52 m)	170 ft (52 m)
Wire rope installed	131 ft (40 m)	131 ft (40 m)
Hook Speed	0-43 ft/min (0-13 m/min)	

Engine

Type	Bosch-Rexroth axial piston variable displacement pump
------	---

Control

Type	Pilot units for remote control of winch motors Progressive and sensitive operations
------	--

Valves

Type	Bosch load-sensing mobile control block proportional directional valves
Maximum capacity	37 US gal/min (140 L/min)
Working pressure	3,625 PSI (250 bar)

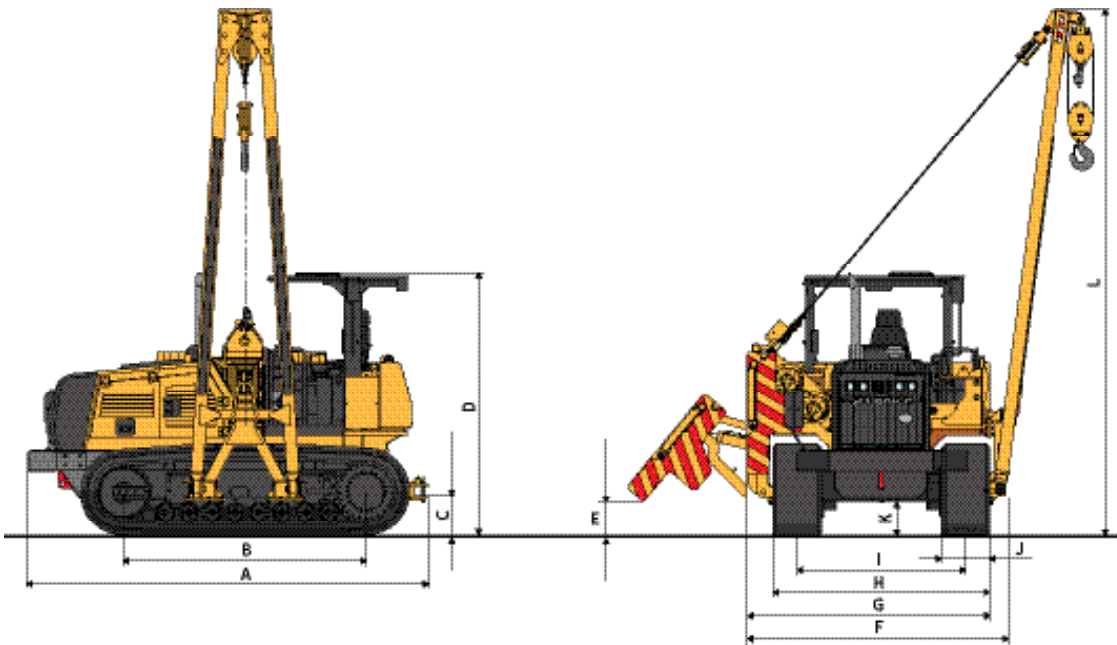
Hydraulic Tank

Type	Pressurized type
Max capacity	33 US gal (125 L)

Filter

Type	Donaldson FI0500
Maximum capacity	132 US gal/min (500 L/min)

Dimensions



A	15.2' (4.62 m)
B	9.2' (2.8m)
C	18" (47.3 cm)
D	10' (3 m)
E	16" (41 cm)
F	9.8' (3 m)
G	9.2' (2.8 m)
H	8.2' (2.5 m)
I	6.4' (1.95 m)
J	22" (56 cm)
K	16" (41cm)
L	20' (6 m)