



## ***The SX-960***

The largest in the line-up, the SX-960 can handle pipe sizes from 36" and up and has a maximum lifting capacity of 200,000 lbs. This model is the first built in the Superior SX pipelayer line-up and has been the pipelayer of choice for many major European contractors.



## Specifications

### Engine

Type	Caterpillar
Model	C13 ACERT
Net flywheel power (DIN 6270-SAEJ 1349)	440 HP - 324 kW
Governed speed	2,200 rpm
Displacement	763 in <sup>3</sup> (12.5 L)

### Hydraulic System

Main pumps	(Bosch-Rexroth) 4 independent variable pumps
Maximum capacity	2 x 119 US gal/min (2 x 450 L/min)
Maximum operating pressure	6,090 p.s.i. (420 bar)
Service pumps	1 tandem gear type
Maximum capacity	13 US gal/min (50 L/min)

### Transmission

Type	Hydrostatic closed circuit
Brakes	(4) Integrated negative control
Final drives	Epicycloidal oil soaked
Maximum speed:	
- 1 speed	1 mph (1.7 km/h)
- 2 speed	1.6 mph (2.6 km/h)
- 3 speed	3.3 mph (5.3 km/h)

### Controls

Type	Twin pilot operated
Safety	Emergency shut-off
TPS System: twin steering system with two levers to control the tracks independently in order to achieve small and precise movements.	

### Track Frame

Hard track frame with sealed and lubricated chain	
Number of bottom rollers	9+9
Number of carrying rollers	2+2
Gauge	8.5 ft (2.6 m)
Length of track on the ground	13.4 ft (4.08 m)
Standard shoes width	36 in (91.4 cm)
Ground pressure	12 p.s.i. (0.83 kg/cm <sup>2</sup> )
Optional shoes width	40 in (101.5 cm)
Ground pressure	10.8 p.s.i. (0.74 kg/cm <sup>2</sup> )
Pitch Chain	10.25 in (26 cm)

### Adjustable Counterweights

QD-CS: quick-disconnected counterweight system for quick disassembly. (entire counterweight pack.)	
Removable Counterweight	18 leaves 1,300 lb (600kg) each
Total weight extendable	29,700 lb (13,500 kg)

### Boom

Type	Std. 28 ft (8.5 m) welded box square section
Optional	30 ft (9.1 m) welded box square section
Diameter wire rope	3/4 in (19 mm)
Minimum breaking strength rope	72,530 lb (323 KN)
Part load line	8
Part boom line	5

### Fluid Capacities

Fuel tank	190 US gal (720 L)
Hydraulic system circuit	91 US gal (345 L)
Cooling system	17.2 US gal (65 L)
Engine oil	9 US (34 L)
Final Drive Each	3.4 US (12 L)

### Electric System

Electric System	
Operating voltage	24 V
Maintenance free supplied batteries	2
Capacity (total)	220 Ah
Starter capacity	7.5 Kw
Alternator	55 A



## Winch Specifications

### Hydraulic Winches

Type	Hydraulic controlled drums (reversible.) Driven by variable flow hydraulic pump and control valve block in open circuit.	
Final drive	Compact hydrostatic drive unit, 3-stage planetary gear	
Brakes	Integrated oil bath multiple disk brake, spring applied hydraulic release	

<i>Winch</i>	<i>Hook</i>	<i>Boom</i>
Drum diameter	15.3 in (39 cm)	15.3 in (39 cm)
Flange Diameter	23.2 in (59 cm)	20.8 in (53 cm)
Drum Length	14.1 in (36 cm)	14.1 in (36 cm)
Capacity (19 mm - 3/4 in)	446 ft (136 m)	344 ft (105 m)
Wire rope installed	394 ft (120 m)	230 ft (70 m)
Hook Speed	0-52 ft/min (0-16 m/min)	

### Engine

Type	Bosch-Rexroth axial piston variable displacement pump
------	---

### Control

Type	Pilot units for remote control of winch motors Progressive and sensitive operations
------	--

### Valves

Type	Bosch load-sensing mobile control block proportional directional valves
Maximum capacity	75.5 US gal/min (286 L/min)
Working pressure	4,642 p.s.i. (320 bar)

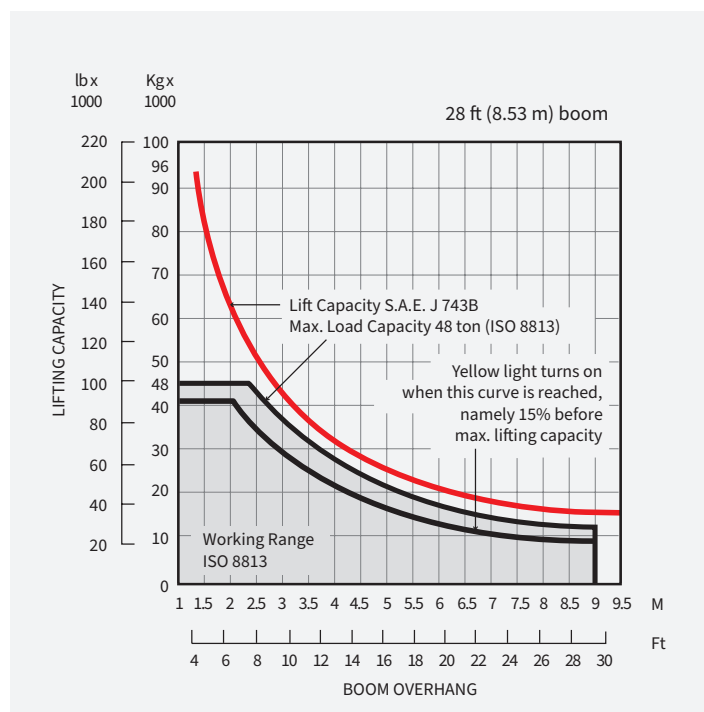
### Hydraulic Tank

Type	Pressurized type
Max capacity	30.4 US gal (115 L)

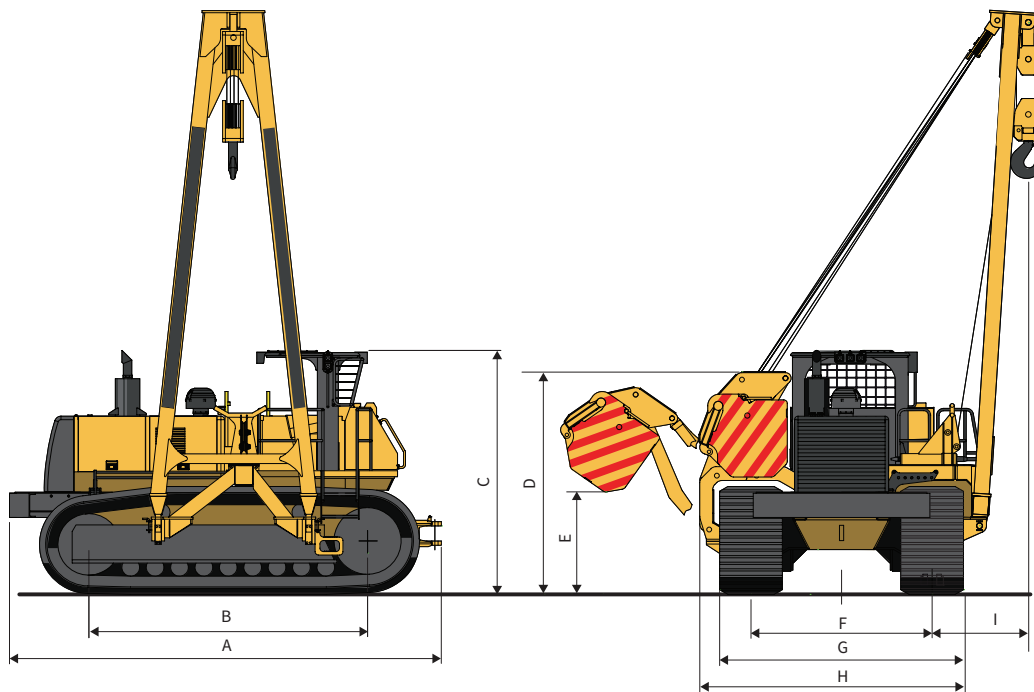
### Filter

Type	Donaldson FI0500
Maximum capacity	132 US gal/min (500 L/min)

## Lifting Capacity



## Dimensions



A	19.3' (5.9 m)
B	13.1' (4 m)
C	11.5' (3.5 m)
D	10.5' (3.2 m)
E	4.9' (1.5 m)
F	8.5' (2.6 m)
G	<i>Std. Shoes</i> - 11.5' (3.5 m) <i>Opt. Shoes</i> - 11.8' (3.6 m)
H	<i>Std. Shoes</i> - 12.3' (3.76 m) <i>Opt. Shoes</i> - 12.5' (3.81 m)
I	<i>Min</i> - 3.9' (1.22 m) <i>Max</i> - 25' (7.5m)



2200 Post Oak Blvd., Ste. 1400, Houston, TX 77056

Main 281.457.4400 | U.S. Toll Free 800.383.2666 | [sales@superiormftg.com](mailto:sales@superiormftg.com) | [www.superiormftg.com](http://www.superiormftg.com)

Weights and dimensions are approximate. All information is subject to change without notice. Superior Manufacturing is a trademark of Worldwide Machinery. All other trademarks are the property of their respective owners. All rights reserved.

**WORLDWIDE**  
**MACHINERY**

*Exclusive Distributor of Superior Manufacturing*