



The SX-260

The SX-260 is the smallest in the line-up and ideal for pipe sizes up to 18". A Tier 4 engine is standard on this machine as are all the safety features that come standard on bigger models.



Specifications

Engine

Type	Caterpillar
Model	C7.1 ACERT Tier 4
Net flywheel power (DIN 6270-SAEJ 1349)	202 HP - 150 kW
Governed speed	2,100 rpm
Displacement	433 in ³ (7.1 L)

Hydraulic System

Main pumps	(Bosch-Rexroth) 3 independent variable pumps
Maximum capacity	2x27.7 US gal/min (2x135 L/min)
Maximum operating pressure	5,945 p.s.i. (410 bar)
Service pumps	Triple gear
Maximum capacity	6.7 US gal/min (31 L/min)

Transmission

Type	Hydrostatic closed circuit
Brakes	(2) Integrated negative control
Final drives	Epicyclic oil soaked
Maximum speed:	
- 1 speed	2.4 mph (4 km/h)
- 2 speed	5.6 mph (9 km/h)

Controls

Type	Twin pilot operated
Safety	Emergency shut-off
TPS System: twin steering system with two levers to control the tracks independently in order to achieve small and precise movements.	

Track Frame

Hard track frame with sealed and lubricated chain	
Number of bottom rollers	8+8
Number of carrying rollers	2+2
Gauge	6.3 ft (1.95 m)
Length of track on the ground	9.2 ft (2.8 m)
Standard shoes width	22 in (56 cm)
Ground pressure	9 lb/in ² (0.62 kg/cm ²)
Ground contact area	34.3 ft ² (31,900 cm ²)

Adjustable Counterweights

QD-CS: quick-disconnected counterweight system for quick disassembly. (en-tire counterweight pack.)		
		Removable
Counterweight	- Front pack (6)	3,781 lb (1,715 kg)
	- Rear pack (5)	3,164 lb (1,435 kg)
Total weight extendable	6,945 lb (3,150 kg)	

Boom

Type	Std. 18 ft (5.5 m) welded box square section
Optional	20 ft (6.1 m) welded box square section
Diameter wire rope	5/8 in (16 mm)
Minimum breaking strength rope	47,415 lb (211 KN)
Part load line	4
Part boom line	4

Fluid Capacities

Fuel tank	76 US gal (290 L)
Hydraulic system circuit	45 US gal (175 L)
Cooling system	5.7 US gal (22 L)
Engine oil	4.2 US gal (16 L)
Final drive each	4.2+4.2 US gal (16+16 L)

Electric System

Operating voltage	24 V
Maintenance free supplied batteries	2
Capacity (total)	100 Ah
Starter capacity	8 Kw
Alternator	55 A

Winch Specifications

Hydraulic Winches

Type	Hydraulic controlled drums (reversible.) Driven by variable flow hydraulic pump and control valve block in open circuit.	
Maximum pressure	4,641 p.s.i. (310 bar)	
Final drive	Compact hydrostatic drive unit, 3-stage planetary gear	
Brakes	Integrated oil bath multiple disk brake, spring applied hydraulic release	

Winch	Hook	Boom
Drum diameter	13 in (324 mm)	13 in (32.4 cm)
Flange Diameter	17 in (430 mm)	17 in (43 cm)
Drum Length (5/8 in [16 mm])	11 in (280 mm)	11 in (28 cm)
Capacity	170 ft (52 m)	170 ft (52 m)
Wire rope installed	131 ft (40 m)	131 ft (40 m)
Hook Speed	0-43 ft/min (0-13 m/min)	

Engine

Type Bosch-Rexroth axial piston variable displacement pump

Control

Type	Pilot units for remote control of winch motors
	Progressive and sensitive operations

Valves

Type Bosch load-sensing mobile control block	
proportional directional valves	Maximum capacity
37 US gal/min (140 L/min)	Working pressure
3,625 p.s.i. (250 bar)	

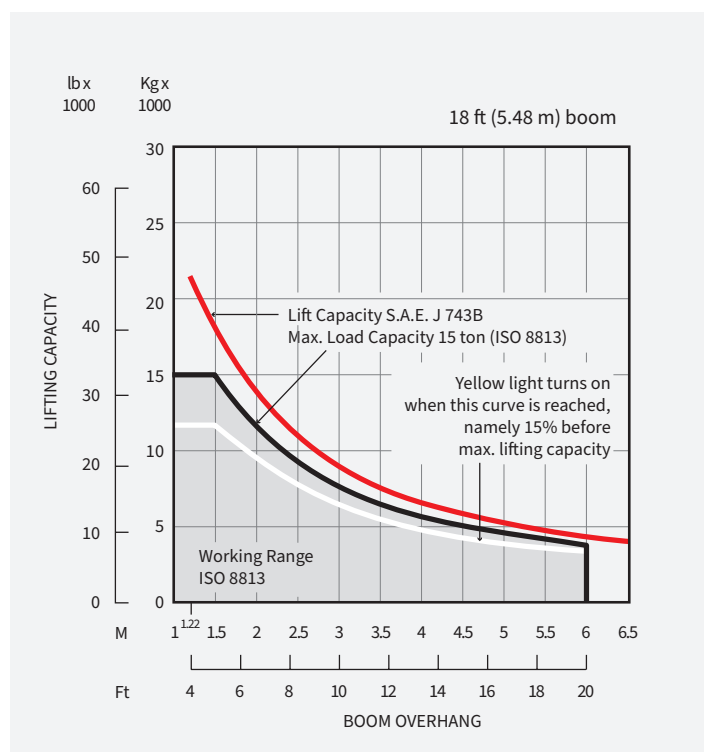
Hydraulic Tank

Type	Pressurized type
Max capacity	33 US gal (125 L)

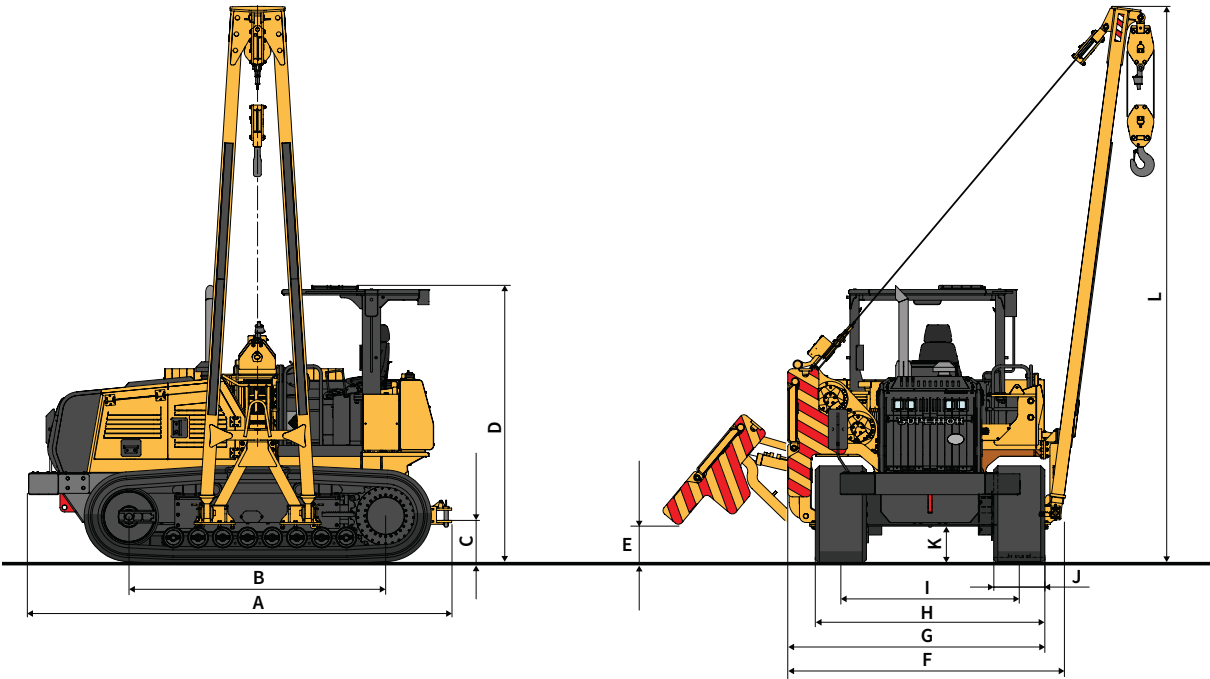
Filter

Type	Donaldson FI0500
Maximum capacity	132 US gal/min (500 L/min)

Lifting Capacity



Dimensions



A	15.2' (4.62 m)
B	9.2' (2.8m)
C	18" (47.3 cm)
D	10' (3 m)
E	16" (41 cm)
F	9.8' (3 m)
G	9.2' (2.8 m)
H	8.2' (2.5 m)
I	6.4' (1.95 m)
J	22" (56 cm)
K	16" (41cm)
L	20' (6 m)



2200 Post Oak Blvd., Ste. 1400, Houston, TX 77056
Main 281.457.4400 | U.S. Toll Free 800.383.2666 | sales@superiormftg.com | www.superiormftg.com

Weights and dimensions are approximate. All information is subject to change without notice.
Superior Manufacturing is a trademark of Worldwide Machinery. All other trademarks are the
property of their respective owners. All rights reserved.

WORLDWIDE
MACHINERY
Exclusive Distributor of Superior Manufacturing